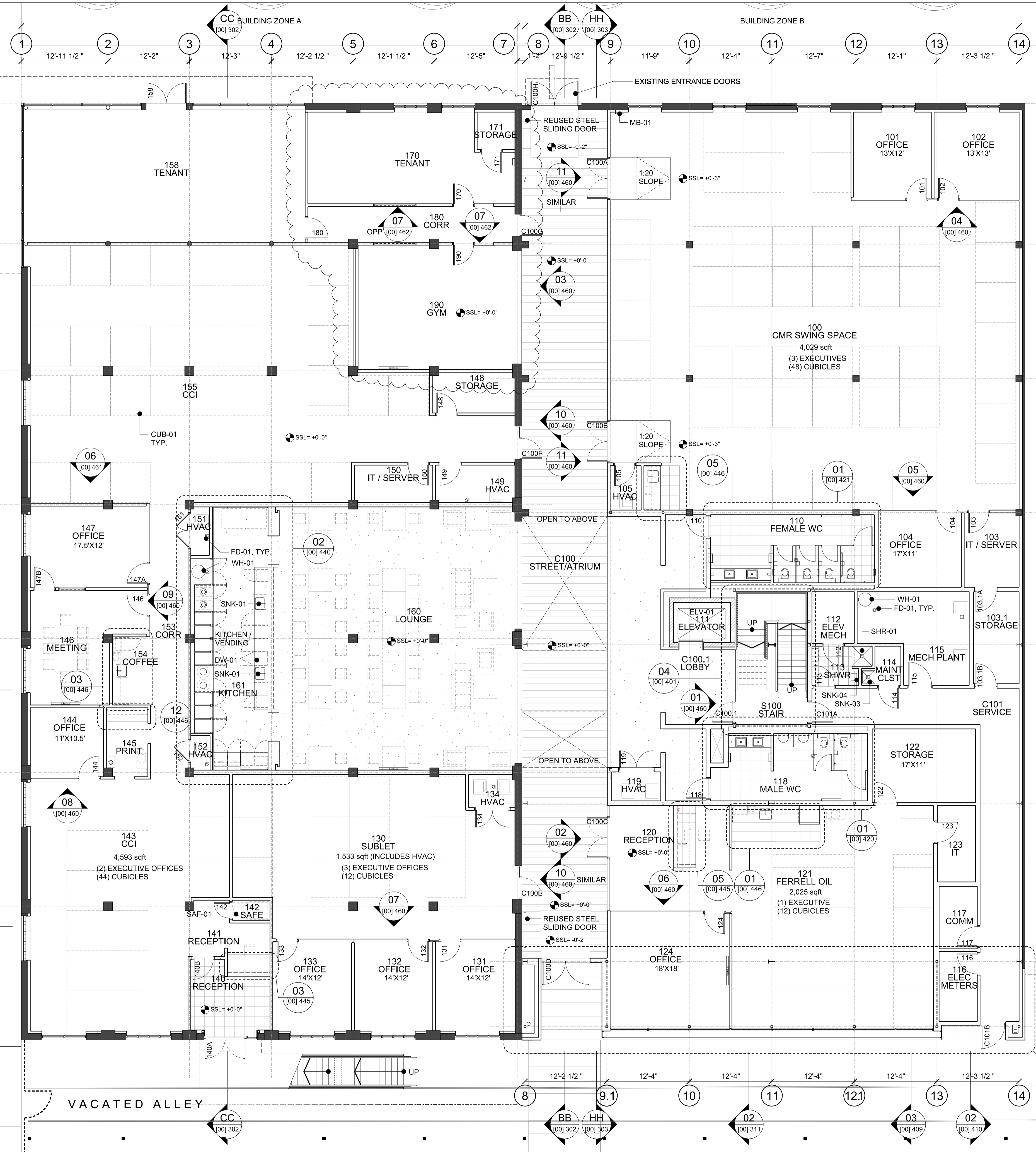


NORTH SHARTEL AVENUE



- EXISTING COLUMN AND/OR WALL TO REMAIN
- NEW LOAD-BEARING CMU WALL
- NEW STEEL STUD PARTITION WALL
- STOREFRONT SYSTEM / GLASS PARTITION WALL
- MOVABLE FURNITURE / 6x6 CUBICLES TYP.
- SOLID DOOR
- STOREFRONT DOOR

GENERAL NOTES:

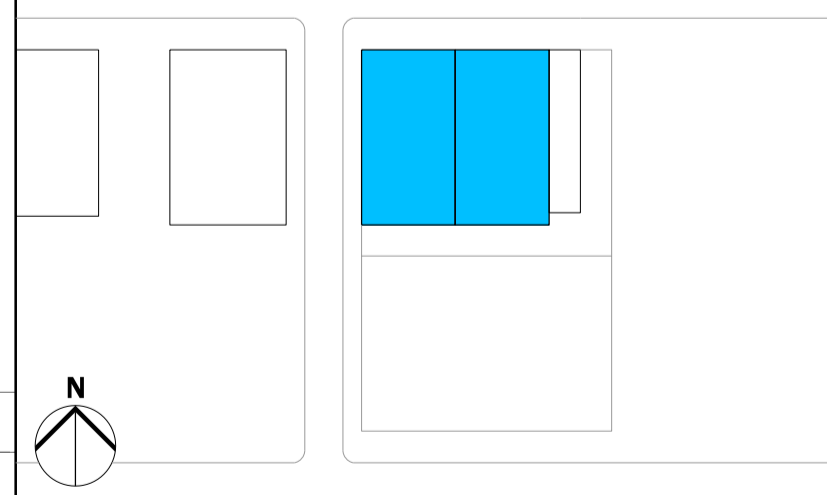
- THIS PLAN INDICATES GENERAL ARRANGEMENTS, OVERALL GRID SET OUTS AND REFERS TO ADDITIONAL ENLARGED PLANS, SCHEDULES AND INFORMATION AS INDICATED.
- REFER TO SHEETS 121 AND 122 FOR WALL TYPE CALL OUTS AND DIMENSIONED FRAMING SET OUTS. REFER TO SHEET FOR WALL TYPE DETAILS/DESCRIPTIONS.
- ROOM SIZES WHERE INDICATED ARE NOMINAL FOR PLANNING PURPOSES ONLY.

CONSULTANTS	NAME
CLIENT:	HART PARTNERS, LLC
CONTRACTOR:	BILL GUMERSON & ASSOCIATES
STRUCTURAL ENGINEER:	OBELISK ENGINEERING INC
MECHANICAL ENGINEER:	MTF ENGINEERING
ELECTRICAL ENGINEER:	MTF ENGINEERING
CIVIL ENGINEER:	COBB ENGINEERING
LANDSCAPE ARCHITECT:	HOCKER DESIGN GROUP

REV	DATE	NOTE
22	11/05/12	ISSUE FOR CONSTRUCTION
21	27/04/12	ISSUE FOR COORDINATION
20	28/03/12	ISSUE FOR EXTERIOR ENVELOPE PACKAGE
19	13/03/12	ISSUE FOR METALWORKS PACKAGE
18	02/03/12	FROZEN PLANS ISSUE
17	20/02/12	ISSUE FOR COORDINATION
16	20/02/12	ISSUE FOR COORDINATION
15	25/01/12	ISSUE FOR COORDINATION
14	23/01/12	ISSUE FOR CLIENT REVIEW
13	12/01/12	ISSUE FOR COORDINATION
12	10/01/12	ISSUE FOR CLIENT REVIEW
11	16/12/11	ISSUE FOR DESIGN DEVELOPMENT
10	14/12/11	ISSUE FOR COORDINATION
09	13/12/11	APPLICATION FOR CERTIFICATE OF APPROVAL
08	07/12/11	ISSUE FOR BUILDING PERMIT
07	28/11/11	ISSUE FOR PRE-APP REVIEW
06	11/11/11	ISSUE FOR REVIEW
05	26/10/11	PROPOSED STEEL COLUMNS INDICATED
04	20/10/11	SCHEMATIC DESIGN ISSUE (STAGE C)
03	28/09/11	REVISED PER OWNER COMMENTS
02	15/07/11	ISSUE FOR COSTING
01	07/07/11	ISSUE FOR REVIEW
-	21/04/11	ISSUE FOR COSTING

NOTE

- Do not scale from this drawing, other than for Planning purposes.
- All dimensions to be checked on site by the contractor and such dimensions to be his responsibility.
- Report all drawing errors, omissions and discrepancies to the architect.
- This document may be issued in an uncontrolled CAD format to enable others to use it as background information to make alterations and/or additions. In that instance the file will be accompanied by a PDF version. It is for those making such alterations and additions to ensure that they make use of current background information. AHMM Ltd accepts no liability for any such alterations or additions to the background information or arising out of changes to background information which occur prior to alterations of additions being made.



**ALLFORD HALL MONAGHAN MORRIS**  
 ARCHITECTS LTD  
 2ND FLOOR, BLOCK C, 5-23 OLD STREET LONDON EC1V 9HL  
 TEL 020 7251 5261 FAX 020 7251 5123 WEB WWW.AHMM.CO.UK

job title  
**ALTERATIONS TO THE HART BUILDING ON HISTORIC FILM ROW**  
 drawing title / location  
**PROPOSED 1ST FLOOR PLAN**

drawn by	checked	scale	status
DG	TG	1/8"=1'-0" @ A1; 1/16"=1'-0" @ A3	CONSTRUCTION

project	zone	classification	drawing no.	revision
10142	AB	[00]	101	22

PARKING LOT #1 - SEPARATE SUBMITTAL BY ENGINEER